

Documentation and Coding: Parkinson's Disease

CMS-HCC_V28 Model Updates

August 2023

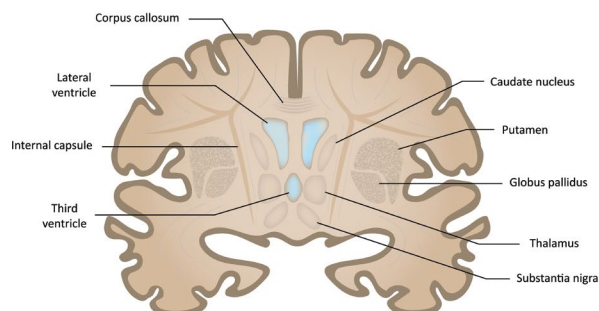
At Healthfirst, we are committed to helping providers accurately document and code their patients' health records. This tip sheet is intended to assist providers and coding staff with the documentation and **ICD-10-CM selection, along with the Centers for Medicare & Medicaid Services (CMS) Hierarchical Condition Category (HCC) Version 28 Model Updates**, on services submitted to Healthfirst—specifically for **Parkinson's disease**. It provides information from industry sources about proper coding practice. However, this document does not represent or guarantee that Healthfirst will cover and/or pay for services outlined. Coverage decisions are based on the terms of the applicable evidence of coverage and the provider's participation agreement. This includes the determination of any amounts that Healthfirst or the member owes the provider.

Parkinson's disease is a progressive nervous system disorder that affects movement.

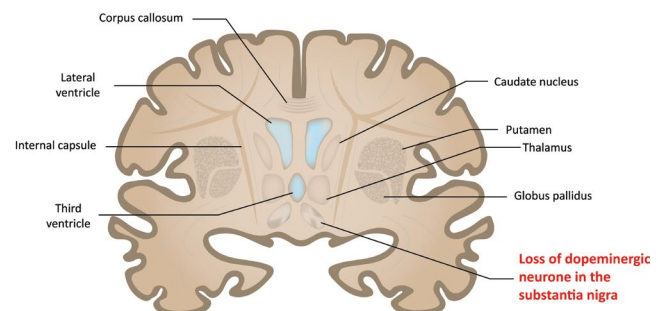
ICD-10-CM Codes and Descriptions

Parkinson's disease - G20*	Secondary Parkinsonism-G21*
<ul style="list-style-type: none"> ■ G20.A1 – Parkinson's disease without dyskinesia, without mention of fluctuations Includes: Parkinson's disease NOS ■ G20.A2 – Parkinson's disease without dyskinesia, with fluctuations ■ G20.B1 – Parkinson's disease with dyskinesia, without mention of fluctuations ■ G20.B2 – Parkinson's disease with dyskinesia, with fluctuations ■ G20.C – Parkinsonism, unspecified 	<ul style="list-style-type: none"> ■ G21.3 – Postencephalitic Parkinsonism ■ G21.4 – Vascular Parkinsonism ■ G21.8 – Other Secondary Parkinsonism ■ G21.9[†] – Secondary Parkinsonism, unspecified

Healthy Brain



Parkinson's Disease Brain



*Requires additional digit to complete diagnosis code.

[†]Use only if no other code describes the condition.

Documentation and Coding: Parkinson's Disease

Coding Tips

Parkinson's disease - G20*	Secondary Parkinsonism-G21*
<p>Use additional code to identify:</p> <ul style="list-style-type: none">▪ Dementia without behavioral disturbance (F02.80, F02.A0, F02.B0, F02.C0)▪ Dementia with behavioral disturbance (F02.81-, F02.A1-, F02.B1-, F02.C1-)▪ Dementia with psychotic disturbance (F02.82, F02.A2, F02.B2, F02.C2)▪ Dementia with mood disturbance (F02.83, F02.A3, F02.B3, F02.C3)▪ Dementia with anxiety (F02.84, F02.A4, F02.B4, F02.C4)▪ Mild neurocognitive disorder due to known physiological condition (F06.7-) <p>This list cannot be coded with G20.C Parkinsonism NOS according to ICD-10-CM guidelines:</p> <ul style="list-style-type: none">▪ Excludes1: Parkinson's disease NOS (G20.A1)<ul style="list-style-type: none">▪ Parkinson's disease with dyskinesia (G20.B-)▪ Parkinson's disease without dyskinesia (G20.A-)▪ Secondary Parkinsonism (G21-)	<p>This list cannot be coded with G21* according to ICD-10-CM guidelines:</p> <ul style="list-style-type: none">▪ G31.83 – Lewy body dementia▪ G10 – Huntington's disease▪ G90.3 – Shy-Drager Syndrome▪ A52.19 – Syphilitic Parkinsonism

*Requires additional digit to complete diagnosis code.

Clinical Documentation Should Include

- The onset of Parkinson's disease and the managing provider.
- A concise active treatment plan linking to the diagnosis Parkinson's disease.
- If applicable, use the Unified Parkinson's Disease Rating Scale (UPDRS) or Movement Disorder Society - Unified Parkinson's Disease Rating Scale (MDS-UPDRS) to determine the progression of the disease.

Documentation and Coding:

Parkinson's Disease

Treatment Plan for Parkinson's Disease

Medications	Surgical Procedures	Alternative Medicine	Therapy	Lifestyle Changes
<ul style="list-style-type: none">▪ Amantadine▪ Anticholinergics▪ Catechol O-Methyltransferase▪ Carbidopa-Levodopa▪ Dopamine Agonists▪ Mao B Inhibitors	<ul style="list-style-type: none">▪ Deep Brain Stimulation	<ul style="list-style-type: none">▪ Massage▪ Tai Chi▪ Yoga▪ Meditation▪ Pet Therapy	<ul style="list-style-type: none">▪ Occupational▪ Physical▪ Speech	<ul style="list-style-type: none">▪ Exercise▪ Healthy Eating

Coding Example

Case	<p>A patient diagnosed with dementia due to Parkinson's disease and aggressive behavior is admitted for treatment. The ICD-10-CM Alphabetic Index to Diseases and Injuries for Parkinson's dementia with behavioral disturbance seems inconsistent. Depending on which Index entry is used, either code G20.C – Parkinsonism, unspecified, or code G31.83, Dementia with Lewy bodies, is assigned.</p> <p>The Alphabetic Index entry for Dementia has subentries for Parkinsonism (G31.81) and G20.C – Parkinsonism, unspecified. However, the Index entry for Parkinson's disease directs to see Parkinsonism. This instructional note is mandatory and indicates Parkinson's disease is coded as Parkinsonism.</p> <p>What is the appropriate code assignment for Parkinson's dementia with aggressive behavior?</p>
Rationale	<p>Assign code G20.C – Parkinsonism, unspecified, and F02.811, Dementia in other diseases classified elsewhere, unspecified severity, with agitation.</p>

Questions?

Contact us at #Risk_Adjustments_and_clinical_Documentation@healthfirst.org.

For additional documentation and coding guidance, please visit the coding section at [HFproviders.org](https://www.healthfirst.org/HFproviders.org).

References

- [ICD-10-CM Guidelines FY2024 \(cms.gov\)](https://www.cms.gov/medicare/coverage/guidelines)
- [mayoclinic.org](https://www.mayoclinic.org) (Parkinson's disease)