

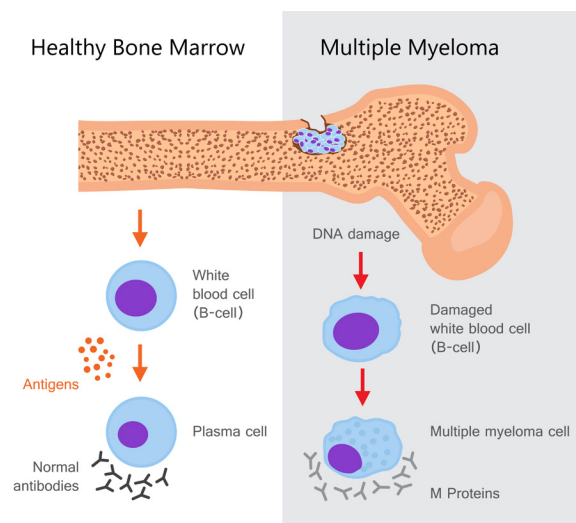
# Documentation and Coding: Multiple Myeloma

December 2022

At Healthfirst, we are committed to helping providers accurately document and code their patients' health records. This tip sheet is intended to assist providers and coding staff with the documentation and ICD-10-CM selection on services submitted to Healthfirst—specifically for multiple myeloma. It provides information from industry sources about proper coding practice. However, this document does not represent or guarantee that Healthfirst will cover and/or pay for services outlined. Coverage decisions are based on the terms of the applicable evidence of coverage and the provider's participation agreement. This includes the determination of any amounts that Healthfirst or the member owes the provider..

## ICD-10-CM Codes and Descriptions

<b>C90.0*</b>	Multiple Myeloma
<b>C90.00</b>	Multiple Myeloma Not Having Achieved Remission
<b>C90.01</b>	Multiple Myeloma in Remission
<b>C90.02</b>	Multiple Myeloma in Relapse
<b>C90.1*</b>	Plasma Cell Leukemia
<b>C90.2*</b>	Extramedullary Plasmacytoma
<b>C90.3*</b>	Solitary Plasmacytoma



\*Requires an additional digit to complete the diagnosis code.

# Documentation and Coding: Multiple Myeloma

## Clinical Documentation Should Include

Identify the Disease State	<ul style="list-style-type: none"><li>▪ In remission</li><li>▪ In relapse</li><li>▪ Not having achieved remission<ul style="list-style-type: none"><li>– Failed remission &amp; unspecified</li></ul></li></ul>
Document the Type of Multiple Myeloma	<ul style="list-style-type: none"><li>▪ Kahler's disease</li><li>▪ Medullary plasmacytoma</li><li>▪ Myelomatosis</li><li>▪ Plasma cell myeloma</li><li>▪ Plasma cell leukemia</li><li>▪ Extramedullary plasmacytoma</li><li>▪ Solitary plasmacytoma</li><li>▪ Localized malignant plasma cell tumor</li><li>▪ Solitary myeloma</li><li>▪ Plasmacytoma</li></ul>
Status of Condition	<ul style="list-style-type: none"><li>▪ Stable</li><li>▪ Improved</li><li>▪ Worsening</li></ul>
Medical Management	<ul style="list-style-type: none"><li>▪ Order tests</li><li>▪ Treatment (targeted therapy, immunotherapy, chemotherapy, corticosteroids, bone-marrow transplant, radiation therapy)</li><li>▪ Follow-up</li><li>▪ Surveillance</li><li>▪ Referrals</li></ul>
Coding Tip	Multiple myeloma should be coded as <b>active</b> when the patient is <b>under surveillance</b> .

# Documentation and Coding: Multiple Myeloma

## Coding Examples

Case 1	Patient is diagnosed with <b>multiple myeloma/plasma cell leukemia</b> . How is multiple myeloma/plasma cell leukemia coded in ICD-10-CM?
ICD-10-CM	C90.10, plasma cell leukemia not having achieved remission.
AHA Coding Clinic (Volume 6, Second Quarter, 2019)	Plasma cell leukemia denotes an aggressive form of multiple myeloma, meaning plasma cells in the bone marrow have spilled out into the blood and transformed into leukemia. Plasma-cell leukemia NOS is an inclusion term under code C90.10. Reference the Alphabetic Index as follows: Leukemia, plasma cell C90.1.
Case 2	Patient with multiple myeloma was seen for ear pain and cold symptoms due to acute otitis media of the left ear and acute viral bronchitis. The provider documented that the patient is immunosuppressed due to current long-term chemotherapy. What are the appropriate code assignments for this encounter?
AHA Coding Clinic (Volume 7 Fourth Quarter, 2020)	Sequence either code <b>J20.8</b> , acute bronchitis due to other specified organisms; or code <b>H66.92</b> , otitis media, unspecified, left ear, as the first-listed diagnosis. Assign codes <b>D84.821</b> , immunodeficiency due to drugs, for the patient's immunosuppressed state because of chemotherapy; and <b>T45.1X5A</b> , adverse effect of antineoplastic and immunosuppressive drugs, initial encounter. In this case, the immune suppression is not part of the intended effect of the antineoplastic drugs and is coded as an adverse effect. Additionally, assign codes <b>C90.00</b> , multiple myeloma not having achieved remission, for the multiple myeloma; and <b>Z79.899</b> , other long-term (current) drug therapy, for the chemotherapy.

## Questions?

Contact us at [#Risk\\_Adjustments\\_and\\_clinical\\_Documentation@healthfirst.org](mailto:Risk_Adjustments_and_clinical_Documentation@healthfirst.org).

For additional documentation and coding guidance, please visit the coding section at [HFproviders.org](http://HFproviders.org).

## References:

- [ICD-10-CM Official Guidelines for Coding and Reporting, FY 2023](#)
- [CodingClinicAdvisor.com](http://CodingClinicAdvisor.com)