

Parkinson's Disease

At Healthfirst, we are committed to helping providers accurately document and code their patients' health records. This tip sheet is intended to assist providers and coding staff with the documentation and ICD-10-CM selection, on services submitted to Healthfirst—specifically for **Parkinson's disease**. It provides information from industry sources about proper coding practice. This document does not represent or guarantee that Healthfirst will cover and/or pay for the services outlined. Coverage decisions are based on the terms of the applicable evidence of coverage and the provider's participation agreement. This includes the determination of any amount that Healthfirst or the member owes the provider.

Parkinson's disease is a progressive nervous system disorder that affects movement.

ICD-10 Codes and Descriptions

Parkinson's Disease – G20. *

Code	Description
G20.A1	Parkinson's disease without dyskinesia, without mention of fluctuations Includes: Parkinson's disease NOS
G20.A2	Parkinson's disease without dyskinesia, with fluctuations
G20.B1	Parkinson's disease with dyskinesia, without mention of fluctuations
G20.B2	Parkinson's disease with dyskinesia, with fluctuations
G20.C	Parkinsonism, unspecified

*Requires additional digit to complete diagnosis code.

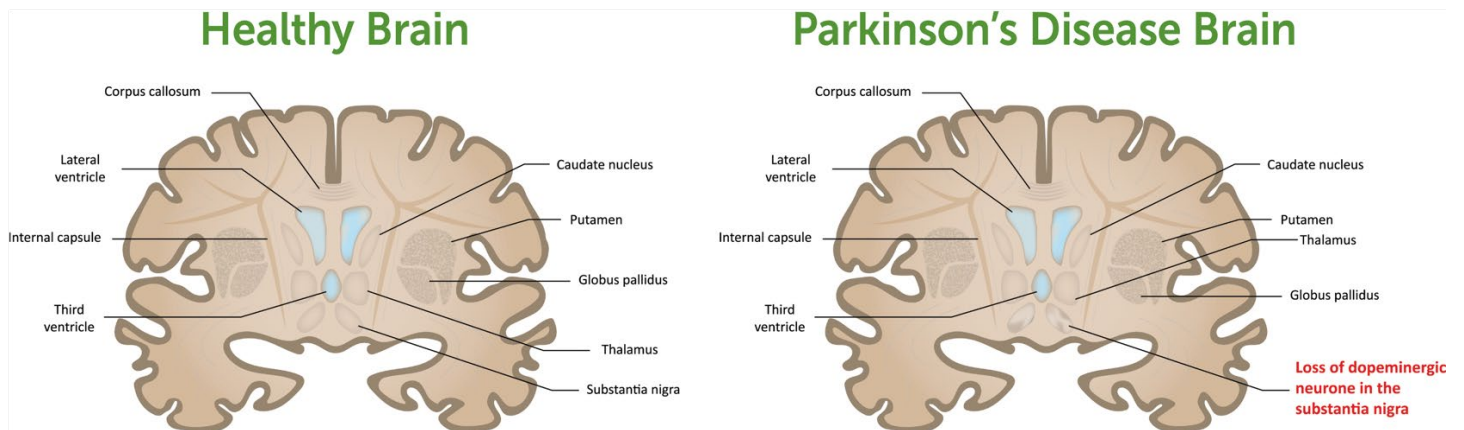
Documentation and Coding

Secondary Parkinsonism – G21. *

Code	Description
G21.3	Postencephalitic Parkinsonism
G21.4	Vascular Parkinsonism
G21.8	Other Secondary Parkinsonism
G21.9†	Secondary Parkinsonism, unspecified

*Requires additional digit to complete diagnosis code.

†Use only if no other code describes the condition.



Documentation and Coding

Coding Tips

Parkinson's Disease – G20*

Use additional code to identify:

Description	Codes
Dementia without behavioral disturbance	F02.80, F02.A0, F02.B0, F02.C0
Dementia with behavioral disturbance	F02.81-, F02.A1-, F02.B1-, F02.C1-
Dementia with psychotic disturbance	F02.82, F02.A2, F02.B2, F02.C2
Dementia with mood disturbance	F02.83, F02.A3, F02.B3, F02.C3
Dementia with anxiety	F02.84, F02.A4, F02.B4, F02.C4
Mild neurocognitive disorder due to known physiological condition	F06.7-

The list below **cannot** be coded with G20.C Parkinsonism NOS according to ICD-10-CM guidelines:

- **Excludes1:** Parkinson's disease NOS (G20.A1)
 - Parkinson's disease with dyskinesia (G20.B-)
 - Parkinson's disease without dyskinesia (G20.A-)
 - Secondary Parkinsonism (G21-)

*Requires additional digit to complete diagnosis code.

Documentation and Coding

Secondary Parkinsonism

The list below **cannot** be coded with Secondary Parkinsonism - G21* according to ICD-10-CM guidelines:

- G31.83 – Neurocognitive disorder with Lewy bodies
- G10 – Huntington’s disease
- G90.3 – Shy-Drager Syndrome
- A52.19 – Syphilitic Parkinsonism

*Requires additional digit to complete diagnosis code.

Clinical Documentation Should Include:

- The onset of Parkinson’s disease and the managing provider.
- A concise active treatment plan linking to the diagnosis Parkinson’s disease.
- If applicable, use the Unified Parkinson’s Disease Rating Scale (UPDRS) or Movement Disorder Society - Unified Parkinson’s Disease Rating Scale (MDS-UPDRS) to determine the progression of the disease.

Treatment Plan for Parkinson’s Disease

Medications	Surgical Procedures	Alternative Medicine	Therapy	Lifestyle Changes
Amantadine	Deep Brain Stimulation	Massage	Occupational	Exercise
Anticholinergics		Tai Chi	Physical	Healthy Eating
Catechol O-Methyltransferase		Yoga	Speech	
Carbidopa-Levodopa				
Dopamine Agonists				
Mao B Inhibitors				

Documentation and Coding

Coding Example

Case 1	A 67-year-old male patient was referred to a movement disorders outpatient clinic due to a one-year nondisabling intermittent resting tremor of the left hand, that later progressed to also involve the contralateral hand. On neurological examination, the patient had normal cognition. Myerson sign (glabellar tap reflex) was present. Oculomotor examination was normal. An intermittent mild resting tremor was observed in the left hand, as well as mild signs of asymmetrical cogwheel rigidity and bradykinesia (left>right). Gait and balance were normal as well as postural reflexes. The patient was diagnosed with idiopathic Parkinson's disease. How is this presentation of Parkinson's disease coded?
Rationale	Assign code G20.B1 , Parkinson's disease with dyskinesia, without mention of fluctuations, as the patient was experiencing mild resting tremor.

References

- <https://www.cms.gov/files/document/fy-2025-icd-10-cm-coding-guidelines.pdf>
- <https://mayoclinic.org> (Parkinson's disease)

Questions?

Contact us at #Risk_Adjustments_and_clinical_Documentation@healthfirst.org.

For additional documentation and coding guidance, please visit the coding section on HFproviders.org

Coverage is provided by Healthfirst Health Plan, Inc., Healthfirst PHSP, Inc., and/or Healthfirst Insurance Company, Inc. (together, "Healthfirst").

PRX25_11(a)

Parkinson's Disease

HFproviders.org